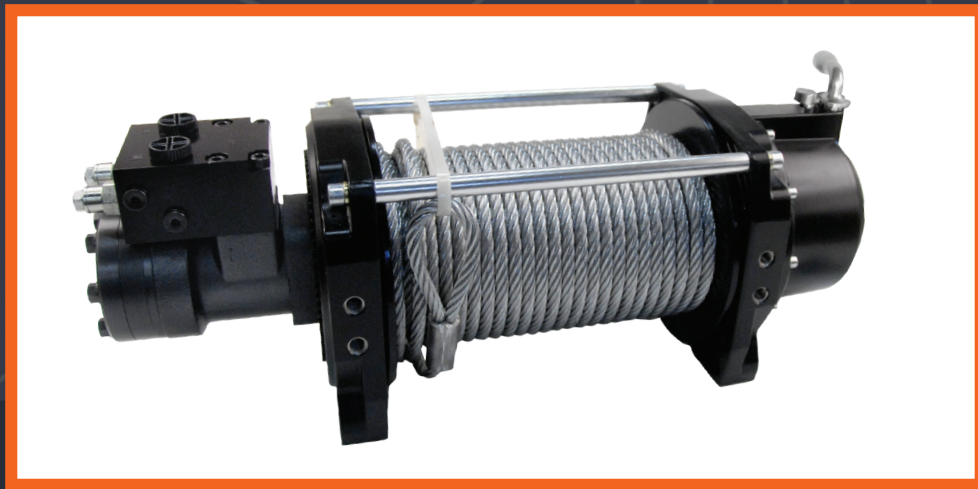


MILE MARKER

TOW/RECOVERY

HS9000 TOW WINCH



70-59000C

SPECIFICATIONS:

Gear Train Planetary, hardened steel gear

Gear Ratio 27:1

Motor 4.9 cubic inches
(80.6 cubic centimeters)

Dimensions (LxWxH) 23.6" X 8.4" X 9.2"
(600 mm X 214 mm X 235 mm)

Steel Cable 3/8" X 100' (9.5 mm X 30.5 m)
(14,400 breaking strength)

Drum Size Diameter/Length 4" X 9.9" (102 mm X 253 mm)

Net Weight 78 lbs

Bolt Pattern 8 bolt pattern
Outer 6.5" X 12" (165 mm X 304.8 mm)
Inner 4.5" X 12" (114.3 mm X 304.8 mm)

Duty Cycle Intermittent per SAE J706 section 6.2
565' (172 m)

FEATURES:

- Automatic Load Holding Brake
- Heavy Duty Engagement Clutch
- Submersible
- Mechanical Lock
- Corrosion Resistant
- Clockwise & Counter Clockwise Rotation
- Cable Tension Plate Sold Separately
- Clutch Kits Sold Separately
- Free Spooling

PERFORMANCE:

Line Pull		Line Speed		
lb	kg	fpm	mpm	flow L/m
0	0	27.3	8.3	59
4000	2270	25.5	7.8	56.3
8000	4086	26.2	8	56.2
9000	5448	26.2	8	55.6