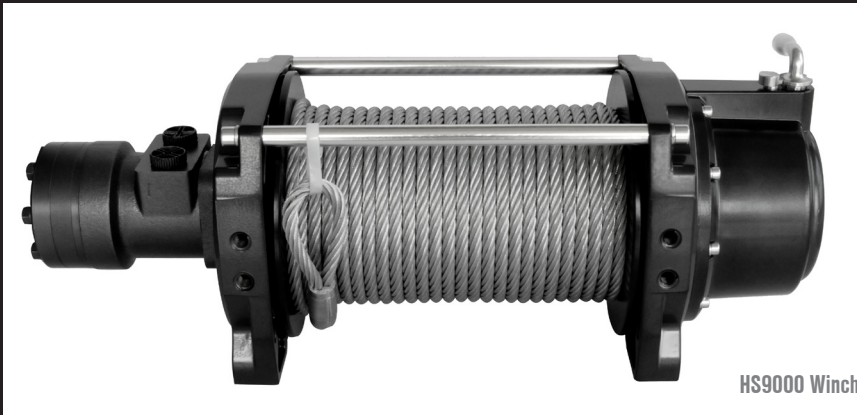




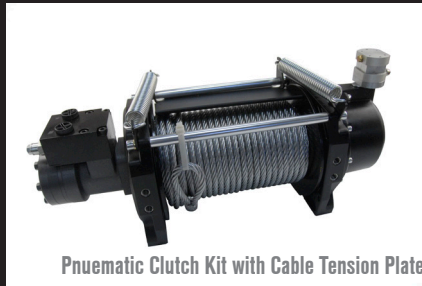
## HS9000 HYDRAULIC WINCH



HS9000 Winch



Manual Clutch Kit



Pneumatic Clutch Kit with Cable Tension Plate



## AFFORDABLE DROP IN REPLACEMENT

Designed for Tow, Trailers, and Utility Vehicles, the HS9000 is a reliable, high speed SAE J706 compliant winch that makes a great retrofit alternative to OEM equipment. This winch utilizes planetary gear sets and a load holding brake, and is offered in both clockwise and counter-clockwise drum configurations. Remote control accessory kits are offered for manual and air powered equipment.

HS9000 Winch (Clockwise): **PN 70-59000C**

HS9000 Winch (Counter Clockwise): **PN 70-59001C**

Remote Manual Clutch Kit: **PN 70592**

Remote Pneumatic Clutch Kit: **PN 70593**

Winch Cable Tension Plate: **PN 70591**

Part Number	70-59000C
Rated line pull	9000 lbs
Gear Train	Planetary, Hardened Steel Gear
Gear Ratio	27:1
Motor	4.91 C.I (80.6 CC)
Dimensions (LxWxH)	23.6"x8.43"x9.25" (600x214x235mm)
Recommended Cable	3/8" x 100' (9.5mmx30.5mm)
Drum Size: Diameter/Length	4" X 9.96" (102mm x 253mm)
Net Weight	78 lbs (no cable)
Bolt Pattern	Bottom: 114.3x165x304.8mm Side: 31.8x304.8mm
Complying Standards	SAE J706

LINE PULL		LINE SPEED		
lb	kg	fpm	mpm	flow L/m
0	0	27.3	8.3	59
4000	2270	25.5	7.8	56.3
8000	4086	26.2	8	56.2
9000	5448	26.2	8	55.6