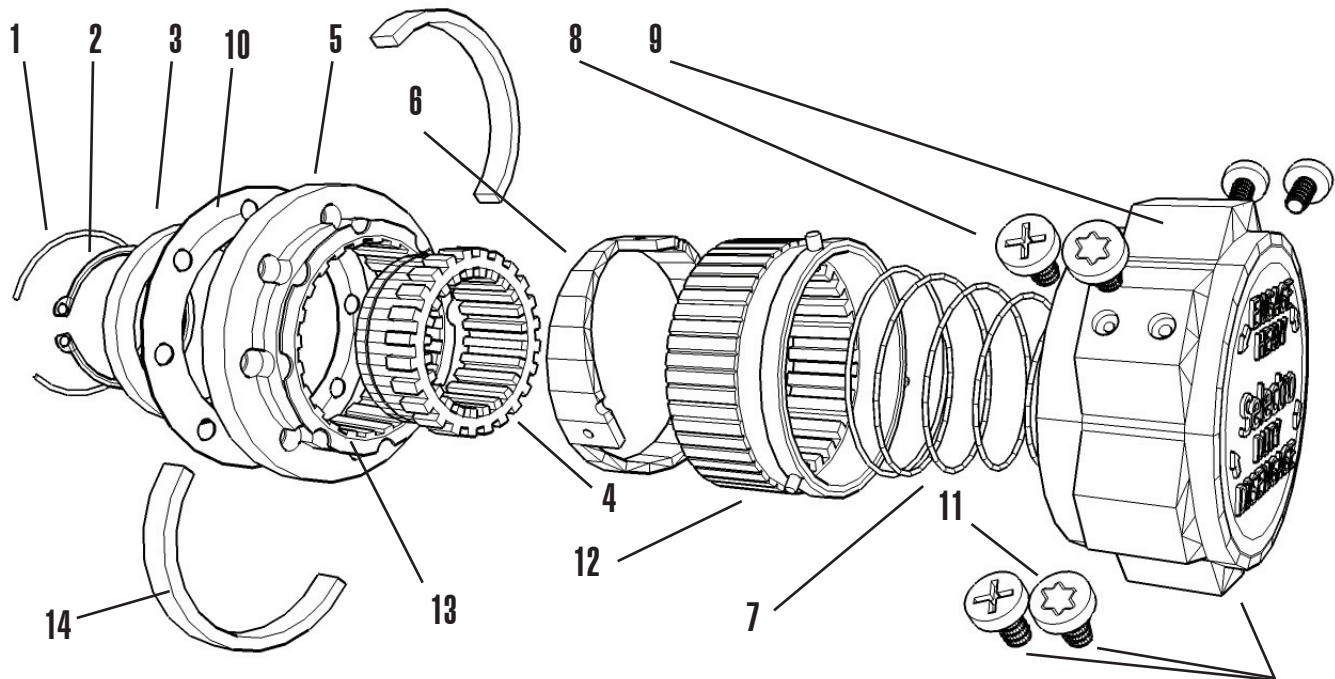


SELECTRO LOCK-OUT HUB PART NUMBER: 11016-01



ITEM	PN:	DESCRIPTION
1	105.04	SNAP RING .062
2	402.05	SNAP RING
3	102.07IH	BUSHING ASSY GP 1
4	104.17	GEAR 16
5	101.46	BASE 16
6	501.107.52TF	CAM ASSY G.1 DELRIN
7	501.109.10	SPRING FOR GROUP 1

ITEM	PN:	DESCRIPTION
8	123.13	PHILIPS HEAD SCREWS
9	501.118.74TF	SELECTRO HANDLE GROUP 1
10	11016-016	GASKET
11	123.22	FH MACH SCREW TORX
12	504.104.52	SLIDE GEAR GROUP 1
13	110.09	O-RING
14	108.01	SPLIT RING 16
NOT SHOWN	16 BOLTS	BOLTS FOR 11016

Specifications

Bolt Circle: 2.844"

Number of Bolts: 8

Number of Splines: 16

Axle Outer Diameter: 1.250"

Installation:

1. Remove existing drive flange and it's fastenings including the retaining ring on the axle and the bolts. Clean the gasket surface to bare metal. Clean the splines and lubricate with light grease.
2. Remove the philips head screws and separate the handle from the base. Do not remove the 3 torx head screws. The slide gear, cam and spring remain attached to the handle by these screws.
3. Assemble base to vehicle. Use gasket or silicone to prevent oil leaks. Use previously removed fastenings to secure the base. Tighten to approx. 25ft. lbs. (3kgm). Replace the retaining ring that was removed in step 1 to secure the axle.
4. Replace the handle. Push handle on to base, gently compressing the spring. Align the screw holes perfectly with the holes in the split ring and insert philips head screws. Make sure the screws enter the holes in the split ring properly. Do not force the screws.